

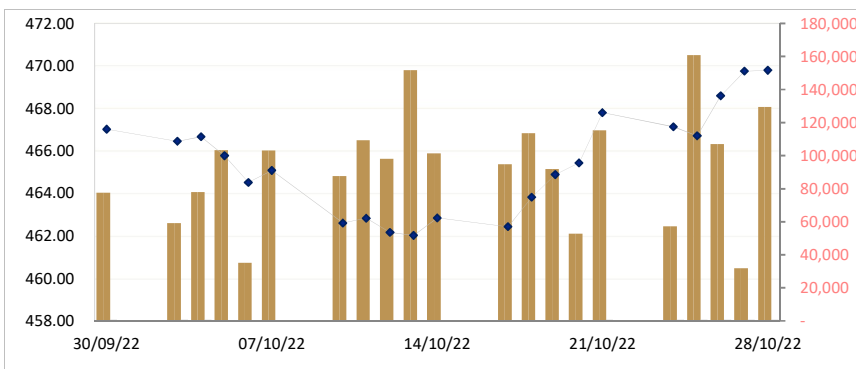


TEL: (855) 23 999 966 / 723 388 / 015 723 388 / 012 840 125 / E-MAIL: INFO@ACLEDASECURITIES.COM.KH

CAMBODIA SECURITIES EXCHANGE: MARKET SUMMARY

Index	469.75	469.85	469.80	0.05	▲0.01	877	361	129,423	1,313,443,840
PPWSA	7,420	7,440	7,400	-20.	▼0.27	8,400	5,400	2,076	15,371,600
GTI	3,920	3,920	3,890	-30.	▼0.77	5,180	2,700	1,178	4,580,520
PPAP	14,000	14,000	13,980	-20.	▼0.14	16,780	10,000	198	2,771,420
PPSP	2,320	2,340	2,300	-20.	▼0.86	2,590	1,120	2,572	5,933,710
PAS	13,000	12,980	12,980	-20.	▼0.15	18,620	11,880	138	5,213,000
ABC	10,420	10,420	10,440	20.	▲0.19	23,600	9,360	123,260	1,282,992,740
PEPC	3,170	3,150	3,150	-20.	▼0.63	4,800	2,700	1	5,213,000

CSX DAILY STOCK INDEX (Last 30 Days)



Securities News

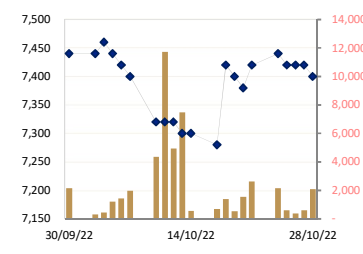
CAMBODIA: MARKET WATCH

The CSX Index edged up 1.16 points, or 0.25 %, to close at 469.75 yesterday. The index that opened at 470.49, which was also the day's high, also marked the day low at 468.35. On the Main Board, PAS surged 100 riels to end the day at 13,000 riels. While ABC added 20 riels to 10,420 riels, GTI went up by 10 riels to 3,920 riels. PWSA, PPAP, PPSP and PEPC remained unchanged from their previous day's close. On the Growth Board, JSL jumped 120 riels to close at 5,900 riels, while DBDE remained flat at 2,380 riels. (*Khmer Times*)

Listed Companies

PPWSA	Phnom Penh Water Supply Authority
Industry	Water Utility
GTI	Grant Twins Int. (Cambodia) Plc.
Industry	Apparel Clothing
PPAP	Phnom Penh Autonomous Port.
Industry	Port Services
PPSP	Phnom Penh SEZ PLC.
Industry	SEZ Developer
PAS	Sihanouk Ville Autonomous Port.
Industry	Port Services
ABC	ACLEDA Bank
Industry	Financial
PEPC	PESTECH Cambodia
Industry	Electricity

PPWSA Daily Stock Price



CAMBODIA: Securities regulator plans to establish property fund stock

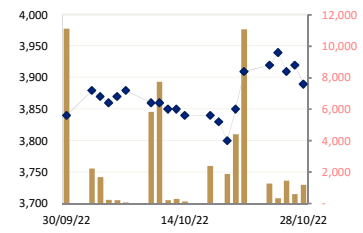
The Securities and Exchange Regulator of Cambodia (SERC) plans to establish a property fund stock exchange for companies to raise cash from the public. The SERC will transform the trading of real estate products into stocks and changing the way it is traded will allow real estate to be traded more easily and more efficiently, as well as help improve the Cambodian stock market, said its director-general Sou Socheat. SERC is studying the possibility of preparing a supplementary regulation for listing real estate-related fund packages on the stock exchange for companies to raise cash from the public for investment, Socheat said in a ceremony of 'My First STOCK' held last Friday. This work will be carried out together with the regulator of real estate and mortgage business with the permission of the Ministry of Economy and Finance, he said. "Property Fund not only allows us to raise cash from the stock exchange to develop real estate, but it also opens for investors to exit the fund package at any time through which we are required to list the fund on the stock exchange," he said. Property funds are investments in commercial property, for example, offices, factories, warehouses and retail space. Customers make lump-sum investments, which are pooled together and used to purchase a range of assets, invested in two ways — directly in commercial property and indirectly, by buying shares in property companies or other property funds. Hong Sok Hour, Chief Executive Officer of the Cambodia Securities Exchange, said the transformation of real estate products into a stock exchange is an easy and quick way for investors to trade. "This is an opportunity for the people to start considering allocating some of their capital from the real estate sector to investing in stocks for quicker and more secure returns than the stagnant real estate sector," he said. The daily stock trading volume in Cambodia has been increasing steadily from year to year. The average daily trading volume was \$25,000 in 2018, rising to \$600,000 per day as of September 2022, with more than 33,000 trading accounts. Launched in 2012, the CSX is a joint venture between the Cambodian governments, which holds 55 % stake while the Korean Exchange owns the remaining 45 %. The CSX has so far received 16 listed companies, including nine equity firms and seven corporate bond firms. (Khmer Times)

Economic News

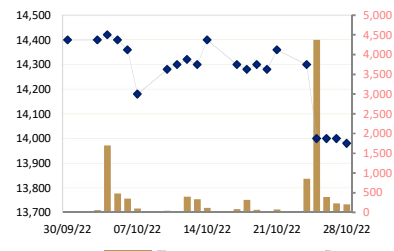
CAMBODIA: Hodo Group's SSEZ strives to become world class enterprise

Hodo Group, a private textile and garment maker based in Wuxi, Jiangsu province in East China, said it would strive to become an excellent enterprise, said Zhou Haijiang, board chairperson of the group and a delegate to the 20th National Congress of the Communist Party of China. Hodo has been actively responding to the Belt and Road Initiative. Together with some other enterprises, they founded Sihanoukville Special Economic Zone in Cambodia. The area has been Cambodia's largest industrial zone in terms of size and occupancy. Now, some 170 companies from China, Europe, the United States and Southeast Asia are operating their businesses in the industrial park, and the zone has created nearly 30,000 jobs. The average income of staff members there has reached \$300 per person monthly, compared with an annual income of \$300 of the whole family for some local employees before, Hodo said. Founded 65 years ago, the group has grown to become a major private enterprise in China from a small workshop. In the past decade, sales revenues of Hodo have increased from 35 billion yuan (\$4.8 billion) to 77 billion yuan, and the company has created about 100,000 jobs locally, he said. The plant of Hodo has transformed into an artificial intelligent factory that is equipped with 5G and industrial internet, and the production efficiency has increased more than 30 percent compared with a traditional factory, Zhou said during an interview at the Great Hall of the People, in Beijing, on Saturday, after the closing session of the 20th National Congress of the CPC. "At our sportswear factory, it only takes 48 hours for the whole process of placing an order to delivering the final product. The smart factory has helped significantly raise our market competitiveness," Zhou said. Among the company's management team, 90 percent of them are Party members. The company said it has grabbed the biggest opportunity to grow as it has implemented the principles and policies of the Party and the country, he added. (Khmer Times)

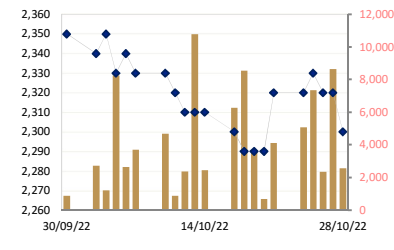
GTI Daily Stock Price



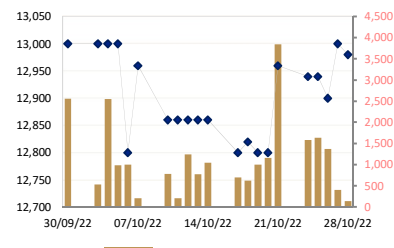
PPAP Daily Stock Price



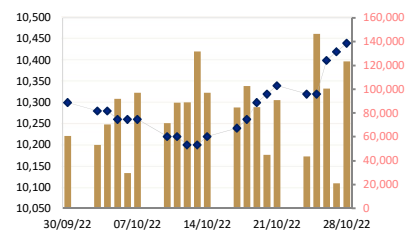
PPSP Daily Stock Price



PAS Daily Stock Price



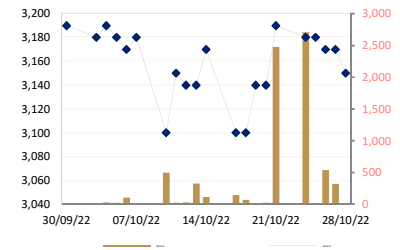
ABC Daily Stock Price



CAMBODIA: \$25.4M projects to create 6500 jobs

In continuance with the policy to strengthen the Covid pandemic-scarred economy and push for growth, the Council for the Development of Cambodia (CDC) has recently approved projects worth \$25.4 million. They are expected to generate around 6,500 job opportunities. While the three new investment projects will be set up in Kandal and Preah Sihanouk provinces, the other 5 will be in the Kampong Speu and Kandal provinces. The projects, according to the CDC release, related to shoe assembly parts, garments, and metal processing belong to Cheng Zhen Yong Industry, Xin Jin Hua Garment, and Success Metal Technology, respectively. These projects are expect to generate 2,500 jobs, according to media reports. The shoe assembly parts and garment factories will be set up in Kandal province's Ang Snoul and Kandal Stung districts, respectively. The metal processing plant will come up in a special economic zone of Preah Sihanouk province. The CDC recently approved one project each of J-Star Garment (Cambodia) and K5 Industrial in the Kampong Speu and Kandal provinces, respectively. With a total investment of \$11.3 million, the 2 planned projects are expect to generate employment for more than 4,000 people. J-Star will invest \$5.8 million to set up a garment factory at Angkorong village in the Moha Rusey commune in Kong Pisey district. K5 Industrial will invest \$5.5 million to establish a factory for manufacturing belts and bags at Prek Samrong village in Takmao city of Kandal province, according to Cambodian media reports. The CDC has issued final registration certificates for 94 new private investment projects outside special economic zones in the first eight months of this year. It was a year-on-year increase of 19 projects. Meanwhile, apparel exports rose by 23.09 % year-on-year to \$7.174 billion in January-September 2022. This constituted 41.60 % of Cambodia's total foreign income of \$17.258 billion during the period under review, according to data from the general department of customs and excise under the ministry of economy and finance. Cambodia's exports of apparel and clothing accessories (knitted) earned \$5.110 billion in January-September 2022, which was 21.1 % higher than the exports worth \$4.220 billion during the corresponding period of 2021. (Khmer Times)

PEPC Daily Stock Price



Historical Data from 11/ October / 22 to 28/ October / 22

Date	Index/Stock	Open	High	Low	Close	Change	Δ (%)	Volume	Value (mil. KHR)	Value (\$)*	Mar. Cap. (mil. KHR)
28/10/22	Index	469.85	469.96	468.17	469.80	0.05	▲0.01%	129,423	1,313,443,840	328,361	7,125,300
	PPWSA	7,440	7,440	7,400	7,400	-20.00	▼0.26%	2,076	15,371,600	3,842.90	643,601
	GTI	3,920	3,920	3,880	3,890	-30.00	▼0.76%	1,178	4,580,520	1,145.13	155,600
	PPAP	14,000	14,000	13,980	13,980	-20.00	▼0.14%	198	2,771,420	692.86	289,167
	PPSP	2,340	2,340	2,300	2,300	-20.00	▼0.86%	2,572	5,933,710	1,483.43	165,313
	PAS	12,980	12,980	12,960	12,980	-20.00	▼0.15%	138	1,790,700	447.68	1,113,320
	ABC	10,420	10,440	10,380	10,440	20.00	▲0.19%	123,260	1,282,992,740	320,748.19	4,522,222
27/10/22	PEPC	3,150	3,150	3,150	3,150	-20.00	▼0.63%	1	3,150	0.79	236,077
	Index	470.49	470.49	468.35	469.75	1.16	▲0.25%	31,834	255,010,900	63,753	7,124,642
	PPWSA	7,440	7,440	7,380	7,420	0.00	0.00%	588	4,349,340	1,087.34	645,341
	GTI	3,920	3,920	3,890	3,920	10.00	▲0.25%	613	2,395,500	598.88	156,800
	PPAP	14,000	14,000	14,000	14,000	0.00	0.00%	234	3,276,000	819.00	289,581
	PPSP	2,320	2,330	2,310	2,320	0.00	0.00%	8,643	19,972,320	4,993.08	166,750
	PAS	13,000	13,000	13,000	13,000	100.00	▲0.77%	401	5,213,000	1,303.25	1,115,036
26/10/22	ABC	10,400	10,440	10,380	10,420	20.00	▲0.19%	21,037	218,813,880	54,703.47	4,513,559
	PEPC	3,180	3,180	3,100	3,170	0.00	0.00%	318	990,860	247.72	237,576
	Index	465.34	468.82	465.34	468.59	1.88	▲0.40%	107,091	1,079,889,340	269,972	7,107,001
	PPWSA	7,420	7,420	7,400	7,420	0.00	0.00%	359	2,659,780	664.95	645,341
	GTI	3,940	3,940	3,900	3,910	-30.00	▼0.76%	1,459	5,698,960	1,424.74	156,400
	PPAP	14,000	14,000	13,980	14,000	0.00	0.00%	389	5,441,840	1,360.46	289,581
	PPSP	2,330	2,330	2,310	2,320	-10.00	▼0.42%	2,349	5,436,070	1,359.02	166,750
25/10/22	PAS	12,800	12,940	12,800	12,900	-40.00	▼0.30%	1,373	17,688,380	4,422.10	1,106,458
	ABC	10,300	10,400	10,300	10,400	80.00	▲0.77%	100,625	1,041,261,420	260,315.36	4,504,895

The securities for your trust

See important disclosures at the end of this report

25/10/22	PEPC	3,180	3,180	3,170	3,170	-10.00	▼0.31%	537	1,702,890	425.72	237,576
	Index	467.30	467.30	465.08	466.71	0.42	▲0.09%	160,781	1,614,664,850	403,666	7,078,447
	PPWSA	7,420	7,440	7,400	7,420	-20.00	▼0.26%	608	4,510,440	1,127.61	645,341
	GTI	3,930	3,950	3,920	3,940	20.00	▲0.51%	340	1,335,960	333.99	157,600
	PPAP	14,000	14,000	13,980	14,000	-300.00	▼2.09%	4,370	61,179,220	15,294.81	289,581
	PPSP	2,340	2,350	2,300	2,330	10.00	▲0.43%	7,351	16,951,400	4,237.85	167,469
	PAS	12,940	12,940	12,800	12,940	0.00	0.00%	1,632	20,978,460	5,244.62	1,109,889
	ABC	10,320	10,320	10,300	10,320	0.00	0.00%	146,475	1,509,693,480	377,423.37	4,470,242
24/10/22	PEPC	3,180	3,180	3,170	3,180	0.00	0.00%	5	15,890	3.97	238,325
	Index	467.83	468.01	464.83	467.13	0.67	▲0.14%	57,154	521,875,130	130,469	7,084,873
	PPWSA	7,440	7,440	7,340	7,440	20.00	▲0.26%	2,154	15,918,920	3,979.73	647,080
	GTI	3,910	3,930	3,910	3,920	10.00	▲0.25%	1,273	4,986,830	1,246.71	156,800
	PPAP	14,360	14,400	14,000	14,300	-60.00	▼0.41%	853	12,072,380	3,018.10	295,786
	PPSP	2,330	2,350	2,320	2,320	0.00	0.00%	5,072	11,799,590	2,949.90	166,750
	PAS	12,980	12,980	12,800	12,940	-20.00	▼0.15%	1,581	20,363,860	5,090.97	1,109,889
	ABC	10,340	10,340	10,280	10,320	-20.00	▼0.19%	43,514	448,324,720	112,081.18	4,470,242
21/10/22	PEPC	3,180	3,180	3,000	3,180	-10.00	▼0.31%	2,707	8,408,830	2,102.21	238,325
	Index	466.23	467.80	463.59	467.80	2.36	▲0.51%	115,226	1,066,512,530	266,628	7,095,103
	PPWSA	7,400	7,440	7,400	7,420	40.00	▲0.54%	2,630	19,553,880	4,888.47	645,341
	GTI	3,850	3,910	3,850	3,910	60.00	▲1.55%	11,082	42,977,970	10,744.49	156,400
	PPAP	14,360	14,360	14,260	14,360	80.00	▲0.56%	70	1,004,420	251.11	297,027
	PPSP	2,320	2,330	2,290	2,320	30.00	▲1.31%	4,110	9,506,960	2,376.74	166,750
	PAS	12,840	12,960	12,800	12,960	160.00	▲1.25%	3,844	49,337,160	12,334.29	1,111,605
	ABC	10,340	10,340	10,220	10,340	20.00	▲0.19%	91,011	936,370,740	234,092.69	4,478,906
20/10/22	PEPC	3,100	3,190	3,100	3,190	50.00	▲1.59%	2,479	7,761,400	1,940.35	239,075
	Index	464.88	465.44	463.41	465.44	0.56	▲0.12%	52,844	508,790,180	127,198	7,059,279
	PPWSA	7,400	7,400	7,340	7,380	-20.00	▼0.27%	1,556	11,423,640	2,855.91	641,862
	GTI	3,800	3,850	3,790	3,850	50.00	▲1.31%	4,422	16,838,480	4,209.62	154,000
	PPAP	14,300	14,300	14,280	14,280	-20.00	▼0.13%	34	485,940	121.49	295,373
	PPSP	2,320	2,320	2,290	2,290	0.00	0.00%	666	1,533,740	383.44	164,594
	PAS	12,840	12,840	12,800	12,800	0.00	0.00%	1,156	14,806,580	3,701.65	1,097,881
	ABC	10,300	10,320	10,260	10,320	20.00	▲0.19%	44,991	463,642,440	115,910.61	4,470,242
19/10/22	PEPC	3,140	3,140	3,110	3,140	0.00	0.00%	19	59,360	14.84	235,327
	Index	463.97	464.88	462.69	464.88	1.06	▲0.23%	91,979	904,392,480	226,098	7,050,769
	PPWSA	7,400	7,420	7,320	7,400	-20.00	▼0.26%	543	4,005,140	1,001.29	643,601
	GTI	3,800	3,820	3,800	3,800	-30.00	▼0.78%	1,883	7,159,320	1,789.83	152,000
	PPAP	14,380	14,380	14,300	14,300	20.00	▲0.14%	62	889,160	222.29	295,786
	PPSP	2,310	2,310	2,290	2,290	0.00	0.00%	3,556	8,161,180	2,040.30	164,594
	PAS	12,820	12,820	12,780	12,800	-20.00	▼0.15%	999	12,786,740	3,196.69	1,097,881
	ABC	10,260	17,380	10,220	10,300	40.00	▲0.38%	84,923	871,350,420	217,837.61	4,461,579
18/10/22	PEPC	3,140	3,140	3,110	3,140	40.00	▲1.29%	13	40,520	10.13	235,327
	Index	462.43	463.82	460.73	463.82	1.39	▲0.30%	113,657	1,094,549,660	273,637	7,034,686
	PPWSA	7,280	7,420	7,280	7,420	140.00	▲1.92%	1,371	10,133,520	2,533.38	645,341
	GTI	3,830	3,830	3,830	3,830	-10.00	▼0.26%	30	114,900	28.73	153,200
	PPAP	14,200	14,300	14,100	14,280	-20.00	▼0.13%	319	4,536,680	1,134.17	295,373
	PPSP	2,300	2,310	2,290	2,290	-10.00	▼0.43%	8,543	19,600,610	4,900.15	164,594
	PAS	12,800	12,820	12,780	12,820	20.00	▲0.15%	627	8,031,420	2,007.86	1,099,597
	ABC	10,240	10,260	10,180	10,260	20.00	▲0.19%	102,699	1,051,921,360	262,980.34	4,444,253
17/10/22	PEPC	3,140	3,150	3,100	3,100	0.00	0.00%	68	211,170	52.79	232,330
	Index	462.99	462.99	461.16	462.43	0.42	▲0.09%	94,863	903,681,480	225,920	7,089,143
	PPWSA	7,300	7,340	7,280	7,280	-20.00	▼0.27%	688	5,022,020	1,255.51	633,165
	GTI	3,840	3,840	3,800	3,840	0.00	0.00%	2,387	9,093,950	2,273.49	153,600
	PPAP	14,340	14,340	14,160	14,300	-100.00	▼0.69%	78	1,109,660	277.42	295,786
	PPSP	2,340	2,340	2,300	2,300	-10.00	▼0.43%	6,281	14,468,960	3,617.24	165,313
	PAS	12,860	12,860	12,800	13,680	-60.00	▼0.46%	695	8,901,340	2,225.34	1,173,361
	ABC	10,220	10,240	10,180	10,240	20.00	▲0.19%	84,592	864,645,060	216,161.27	4,435,589
14/10/22	PEPC	3,130	3,170	3,100	3,100	-70.00	▼2.20%	142	440,490	110.12	232,330
	Index	462.02	462.85	461.42	462.85	0.83	▲0.18%	101,527	1,017,722,290	254,431	7,019,919
	PPWSA	7,300	7,320	7,280	7,300	0.00	0.00%	550	4,015,800	1,003.95	634,904
	GTI	3,840	3,840	3,830	3,840	-10.00	▼0.25%	130	499,190	124.80	153,600
	PPAP	14,360	14,400	14,360	14,400	100.00	▲0.69%	114	1,641,040	410.26	297,855
	PPSP	2,310	2,320	2,300	2,310	0.00	0.83%	2,438	5,632,910	1,408.23	166,031
	PAS	12,860	12,860	12,860	12,860	0.00	0.00%	1,043	13,412,980	3,353.25	1,103,027
	ABC	10,200	10,220	10,180	10,220	20.00	▲0.19%	97,137	992,158,800	248,039.70	4,426,926
	PEPC	3,140	3,190	3,140	3,170	30.00	▲0.95%	115	361,570	90.39	237,576

13/10/22	Index	462.16	462.21	460.07	462.02	0.14	▲ 0.03%	151,612	1,436,503,660	359,126	7,007,339
	PPWSA	7,320	7,360	7,200	7,300	-20.00	▼ 0.27%	7,495	54,367,440	13,591.86	634,904
	GTI	3,850	3,850	3,850	3,850	0.00	0.00%	295	1,135,750	283.94	154,000
	PPAP	14,320	14,380	14,300	14,300	-20.00	▼ 0.13%	328	4,690,880	1,172.72	295,786
	PPSP	2,310	2,320	2,300	2,310	0.00	0.00%	10,771	24,793,490	6,198.37	166,031
	PAS	12,860	12,860	12,800	12,860	0.00	0.00%	771	9,886,680	2,471.67	1,103,027
	ABC	10,200	10,200	10,160	10,200	0.00	0.00%	131,631	1,340,621,480	335,155.37	4,418,263
	PEPC	3,140	3,140	3,140	3,140	0.00	0.00%	321	1,007,940	251.99	235,327
12/10/22	Index	462.83	463.42	461.06	462.16	0.67	▲ 0.14%	98,106	970,475,270	242,619	7,009,492
	PPWSA	7,320	7,380	7,200	7,320	0.00	0.00%	4,921	35,733,380	8,933.35	636,644
	GTI	3,850	3,850	3,810	3,850	-10.00	▼ 0.25%	203	780,510	195.13	154,000
	PPAP	14,320	14,320	14,120	14,320	20.00	▲ 0.13%	396	5,653,120	1,413.28	296,200
	PPSP	2,340	2,340	2,310	2,310	-10.00	▼ 0.43%	2,372	5,483,360	1,370.84	166,031
	PAS	12,960	12,960	12,800	12,860	0.00	0.00%	1,240	15,918,240	3,979.56	1,103,027
	ABC	10,220	10,220	10,160	10,200	-20.00	▼ 0.19%	88,950	906,831,220	226,707.81	4,418,263
	PEPC	3,150	3,150	3,140	3,140	-10.00	▼ 0.31%	24	75,440	18.86	235,327
11/10/22	Index	461.46	462.94	460.97	462.83	0.23	▲ 0.05%	109,288	1,023,812,510	255,953	7,019,610
	PPWSA	7,320	7,380	7,200	7,320	0.00	0.00%	11,744	84,784,360	21,196.09	636,644
	GTI	3,850	3,870	3,800	3,860	0.00	0.00%	7,740	29,676,130	7,419.03	154,400
	PPAP	14,300	14,300	14,300	14,300	20.00	▲ 0.14%	1	14,300	3.58	295,786
	PPSP	2,340	2,340	2,320	2,320	-10.00	▼ 0.42%	873	2,028,390	507.10	166,750
	PAS	12,860	12,900	12,860	12,860	0.00	0.00%	201	2,590,660	647.67	1,103,027
	ABC	10,180	10,220	10,160	10,220	0.00	0.00%	88,707	904,650,320	226,162.58	4,426,926
	PEPC	3,100	3,150	3,100	3,150	50.00	▲ 1.61%	22	68,350	17.09	236,077

Source: Data from CSX, and Compiled by ACS *Exchange Rate: USD1=KHR 4,000

DISCLAIMER

ALL RESEARCH is based on material compiled from data considered reliable at the time of writing. However, information and opinions expressed will be subject to change at short notice, and no part of this report is to be construed as an offer or solicitation of an offer to transact any securities or financial instruments whether referred to herein or otherwise. We do not accept any liability directly or indirectly that may arise from investment decision-making based on this report. The company, its directors, officers, employees and/or connected persons may periodically hold an interest in the securities mentioned.

All Rights Reserved. No part of this publication may be used or re-produced without expressed permission from [ACLEDA SECURITIES PLC.](#)

ACLEDA IN GROUP

ACLEDA BANK PLC.

HEADQUARTERS

61, Preah Monivong Blvd., Sangkat Srah Chork,
Khan Daun Penh, Phnom Penh, Kingdom of Cambodia.
P.O. Box: 1149
Tel: (855) 23 998 777 / 430 999
Fax: (855) 23 998 666 / 430 555
E-mail: acledabank@acledabank.com.kh
Website: www.acledabank.com.kh
SWIFT: ACLBKHPP

ACLEDA BANK PLC.

CASH SETTLEMENT, SECURITIES REGISTRAR, SECURITIES TRANSFER, AND
PAYING AGENT

HEADQUARTERS

61, Preah Monivong Blvd., Sangkat Srah Chork,
Khan Daun Penh, Phnom Penh, Kingdom of Cambodia.
P.O. Box: 1149
Tel: (855) 23 998 777 / 430 999
Fax: (855) 23 998 666 / 430 555
E-mail: acledabank@acledabank.com.kh
Website: www.acledabank.com.kh
SWIFT: ACLBKHPP

ACLEDA BANK LAO LTD.

HEADQUARTERS

#398, Corner of Dongpalane and Dongpaina Road, Unit 20,
Phonesavanh
Neua Village, Sisattanak District, Vientiane Capital, Lao PDR.
P.O. Box: 1555
Hotline :1800
Tel: +856 (0)21 264 994 / 264 998
Fax: +856 (0)21 264 995/ 219 228
E-mail: acledabank@acledabank.com.la
Website: www.acledabank.com.la
SWIFT: ACLBLALA

ACLEDA SECURITIES PLC.

HEADQUARTERS

5th Floor, ACLEDA Building
61, Preah Monivong Blvd., Sangkat Srah Chork,
Khan Daun Penh, Phnom Penh, Kingdom of Cambodia.
Tel: (855) 23 723 388 / 999 966 / 999 977
Email: acs.rep@acledasecurities.com.kh
Website: www.acledasecurities.com.kh

ACLEDA INSTITUTE OF BUSINESS

HEADQUARTERS

Address: #1397, Phnom Penh-Hanoi
Friendship Blvd., Phum Anlong Kngan, Sangkat Khmuonh, Khan
Saensokh, Phnom Penh, Kingdom of Cambodia
P. O. Box: 1149
Tel: + 855 (0)23 881 790 / 999 944
E-mail: info@acleda-aib.edu.kh
Website: www.acleda-aib.edu.kh

ACLEDA MFI MYANMAR CO., LTD.

HEADQUARTERS

#186(B), ShweGonTaing Road, Yae Tar Shae Block,
Bahan Township, Yangon Region,
The Republic of the Union of Myanmar.
Tel: (+95-1) 559 475 / 552 956
Website: www.acledamfi.com.mm